

CSCI 241

Scott Wehrwein

Trees: Motivation

Goals

Understand some of the uses for trees:

- To model hierarchical data.
- To implement abstract data types.

Trees in computer science



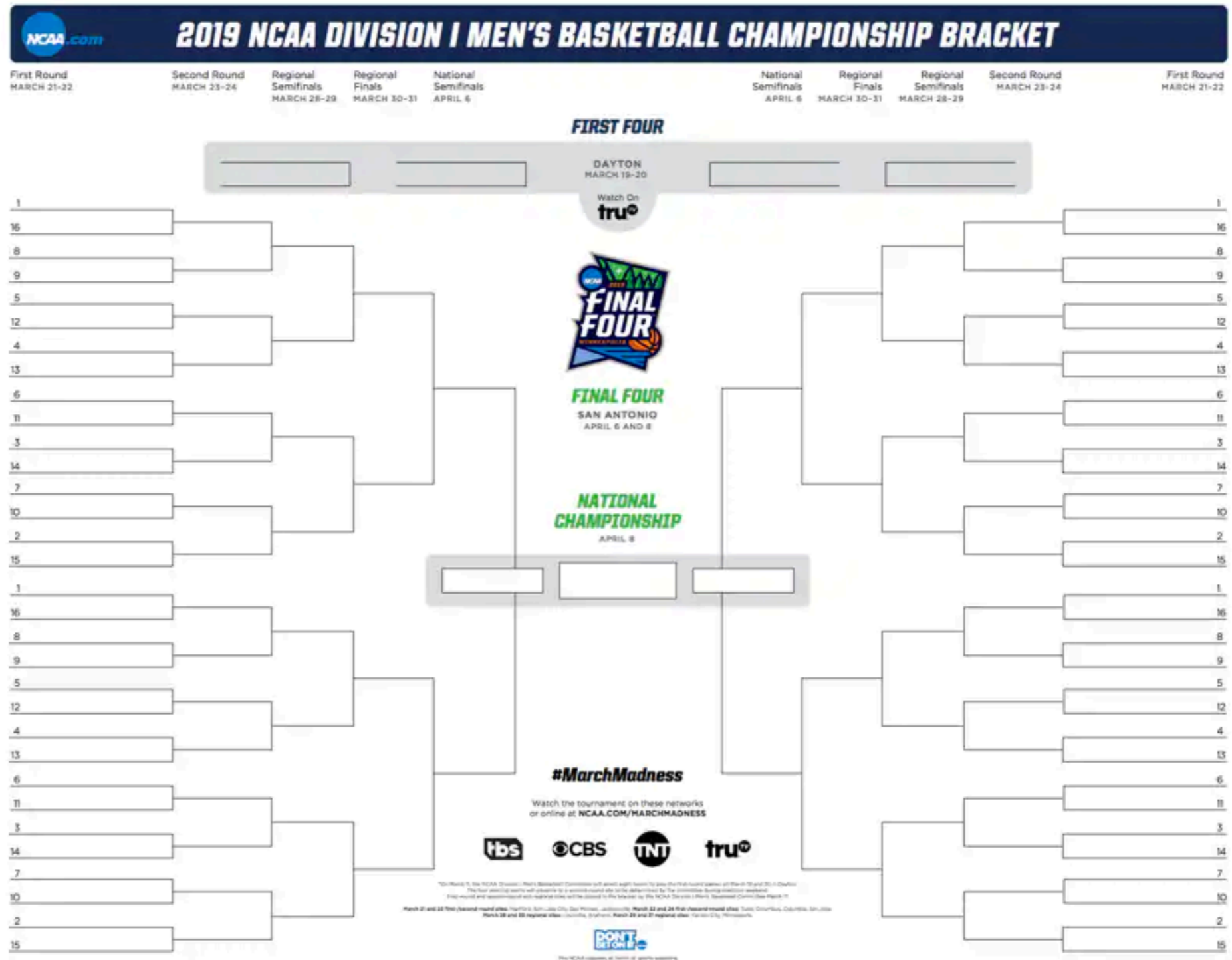
Why do we need these?

Why do we need these?

1. to represent **hierarchical structure**.

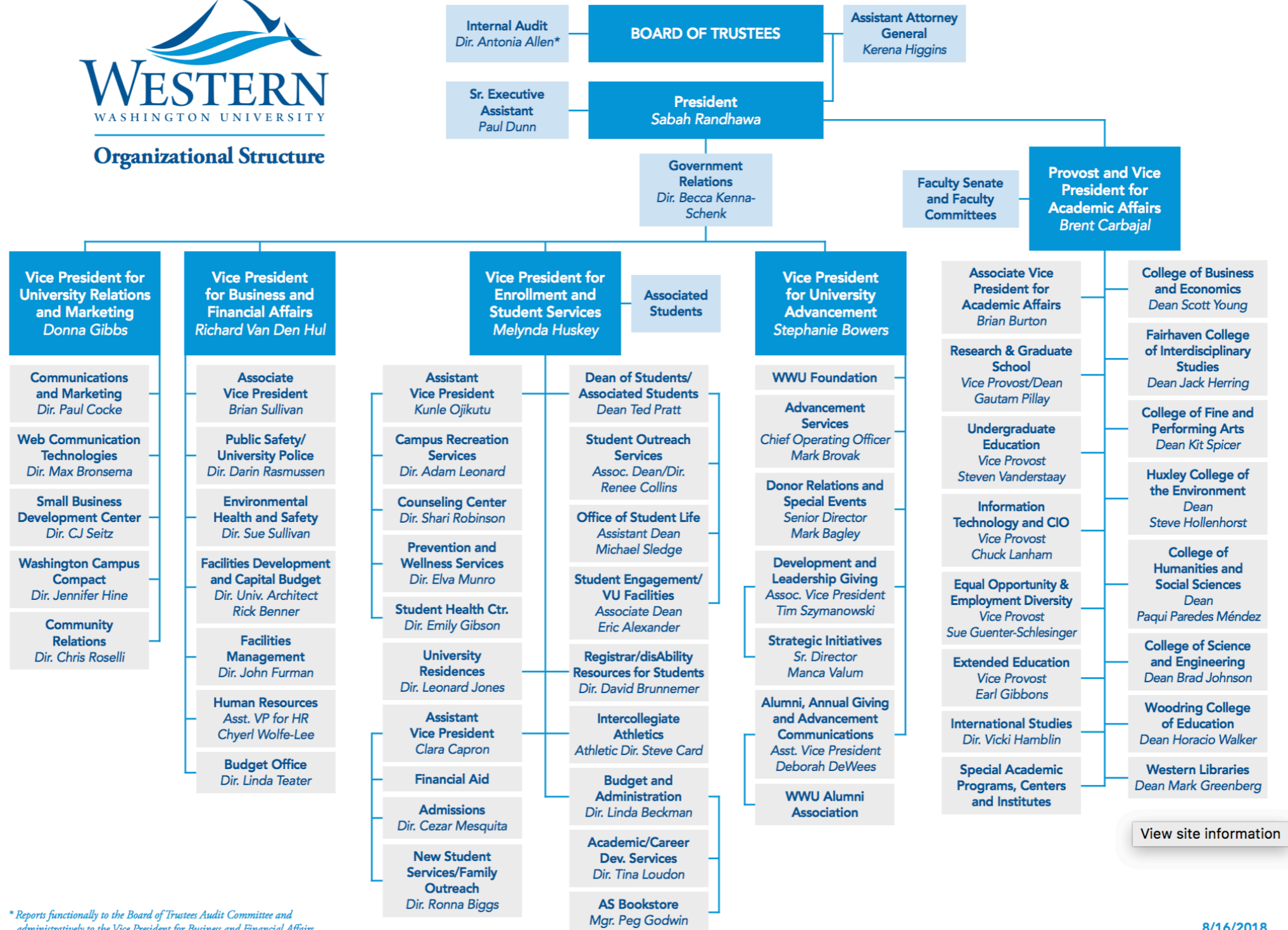
Why do we need these?

1. to represent **hierarchical structure**.



Why do we need these?

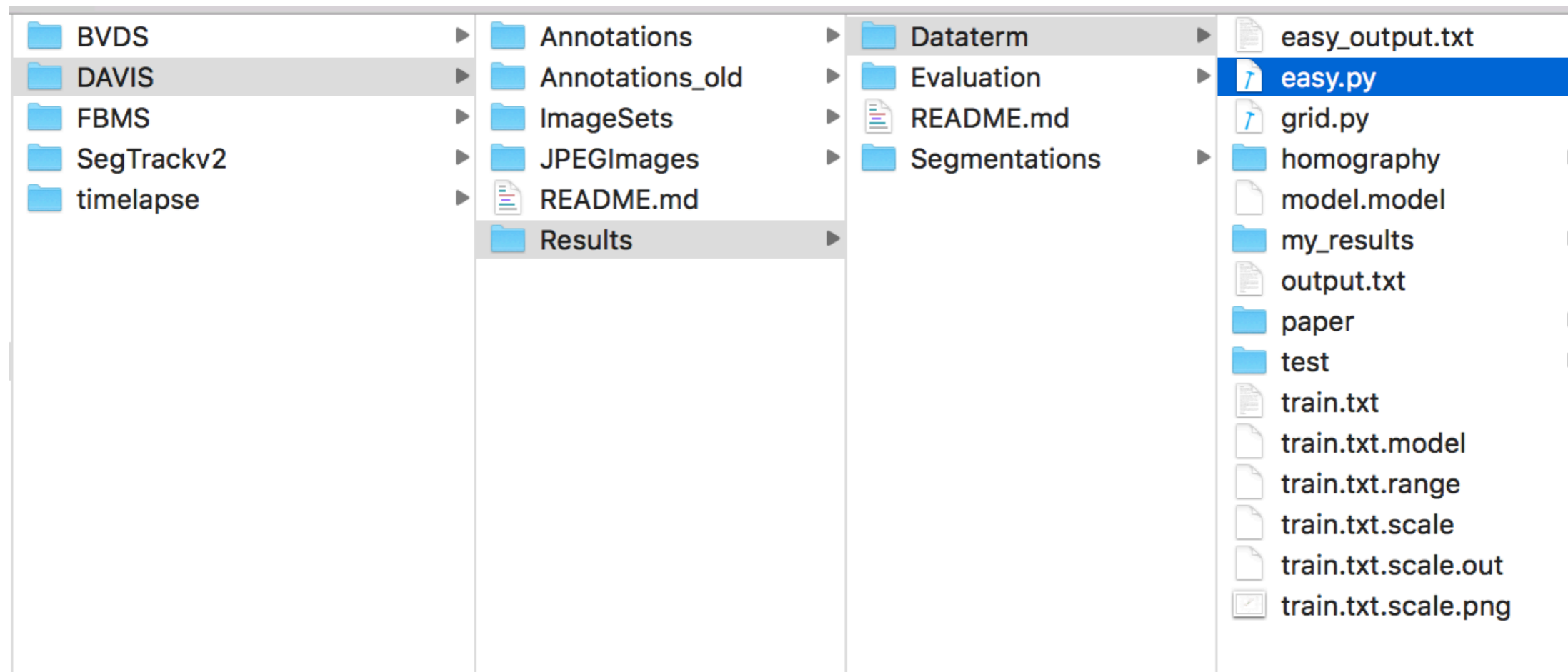
1. to represent **hierarchical structure.**



* Reports functionally to the Board of Trustees Audit Committee and administratively to the Vice President for Business and Financial Affairs

Why do we need these?

1. to represent **hierarchical structure**.



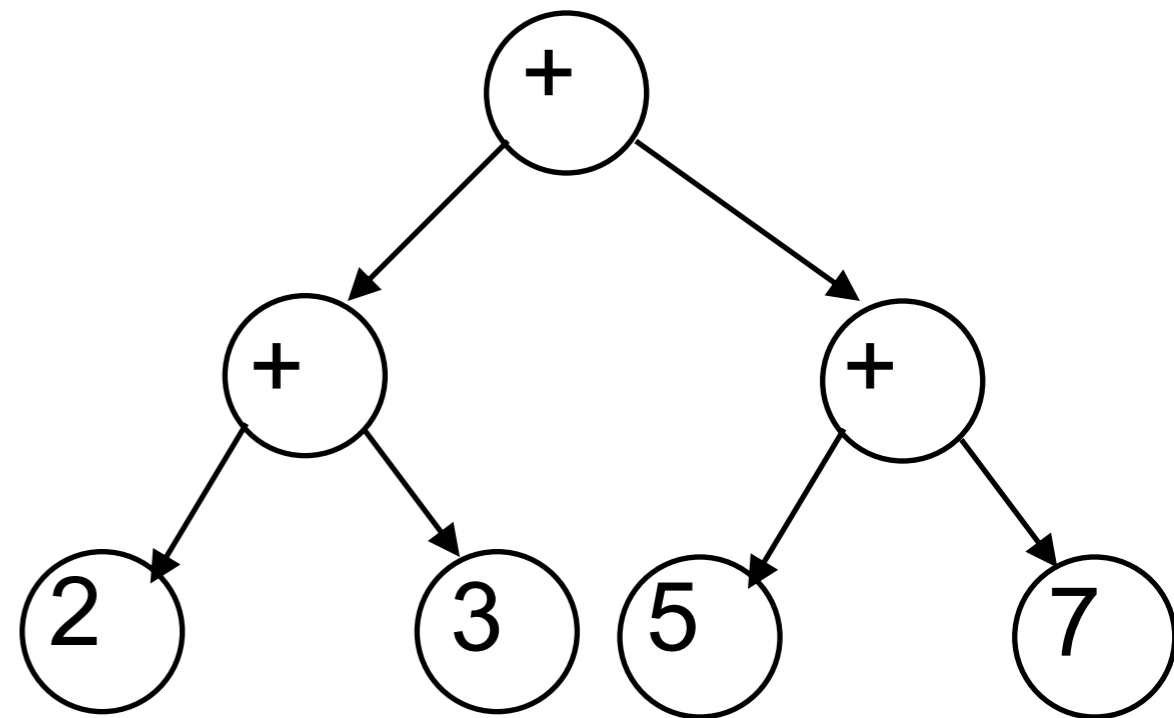
Why do we need these?

1. to represent **hierarchical structure**.

Syntax Trees:

- In textual representation, **parentheses** show hierarchical structure
- In tree representation, hierarchy is explicit in the tree's **structure**

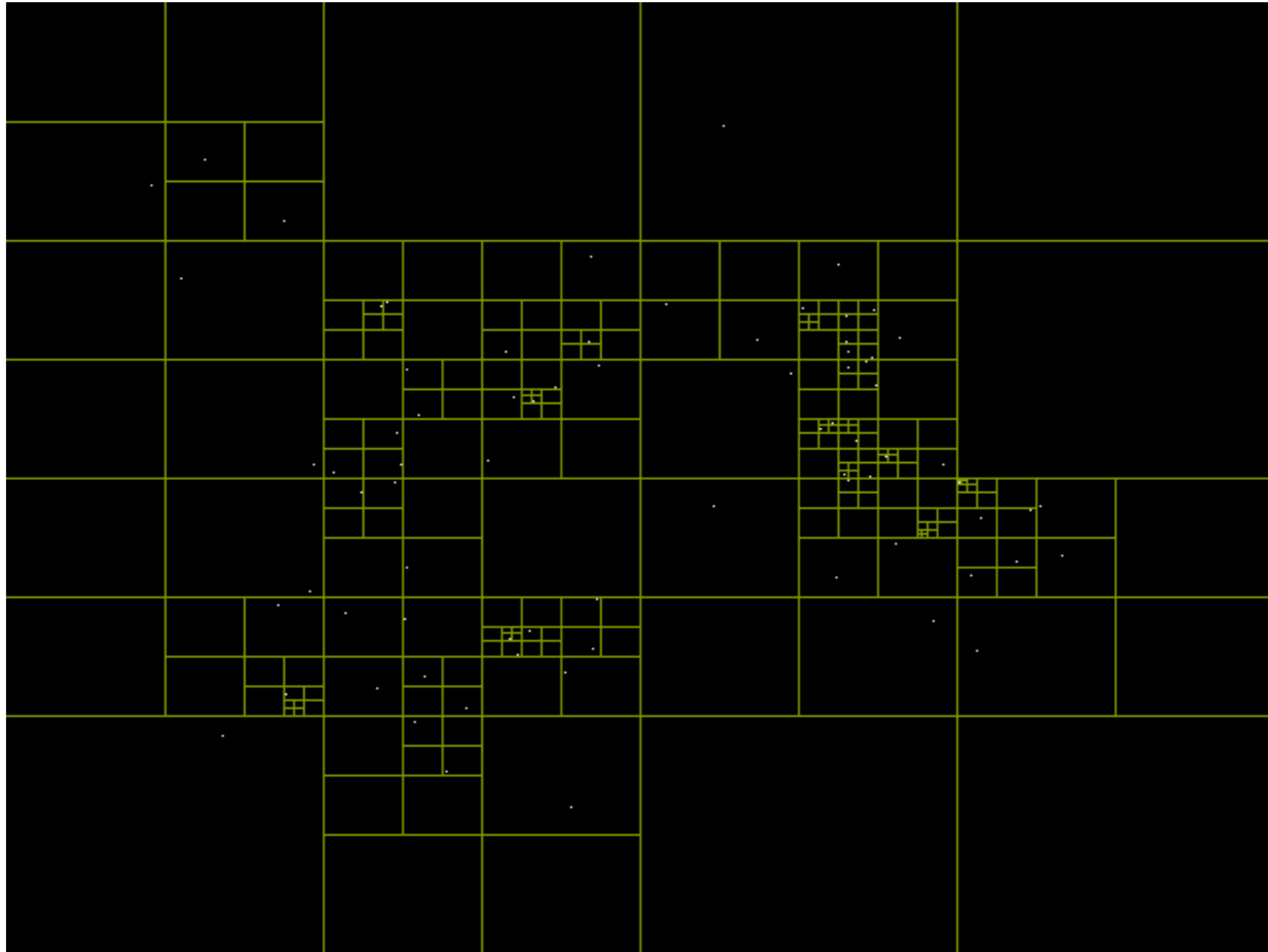
$((2+3) + (5+7))$



Also used for **natural languages** and **programming languages**!

Why do we need these?

1. to represent **hierarchical structure**.



Quadtrees for **collision detection** in graphics and simulation

Why do we need these?

2. to implement various ADTs **efficiently**.

Tree**S**et, Tree**M**ap

The height of a balanced binary tree is $O(\log n)$

Consequence: Many operations (find, insert, ...) can be done in **$O(\log n)$** in *carefully-designed* trees.

